

Quick Start Guide

802.11ac Dual-Band Enterprise Access Point
ECW5211-L | ECW5211-L2 | ECW5211-O

Package Contents



1



2



3



4



5



6

1. ECW5211-L, ECW5211-L2 or ECW5211-O access point
2. AC power adapter
3. Ceiling-mount kit—4 T-bar clips and 2 screws

4. Wall-mount kit—2 wall plugs and 2 screws
5. Four adhesive rubber feet
6. Documentation—*Quick Start Guide* (this document) and *Safety and Regulatory Information*



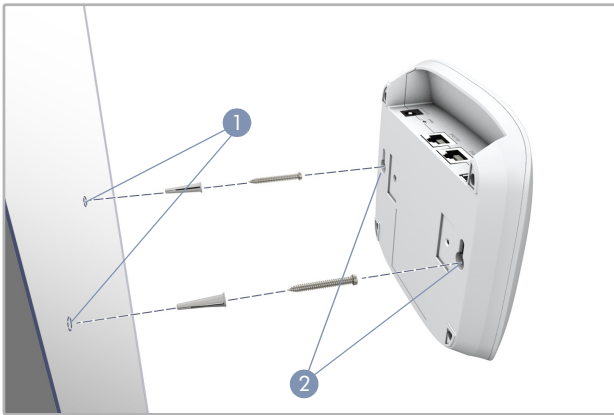
Warning: For indoor use only. The access point, AC power adapter, and all connected cables are not for outdoor use.



Note: For safety and regulatory information, refer to the *Safety and Regulatory Information* document included with the AP.

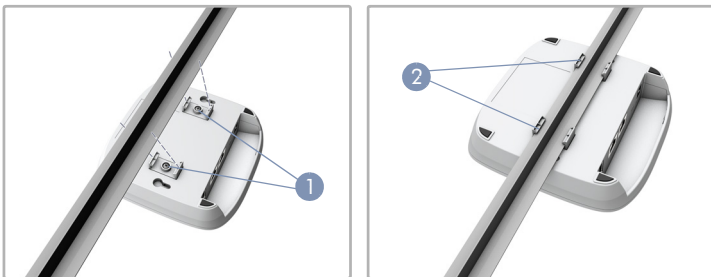
1 Mount the AP

a. Mounting on a Wall



1. Set two screws in the wall 128 mm (5.0 in.) apart.
2. Slide the AP's wall mounting slots down onto the screws so that the unit is secure.

b. Mounting on a Ceiling T-Bar



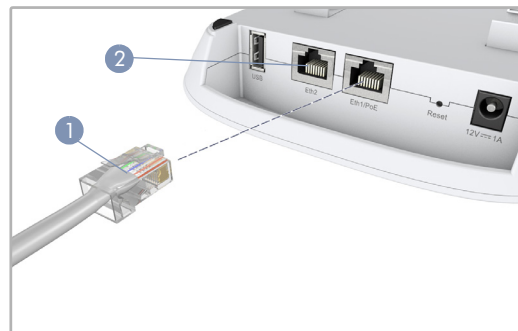
1. Use the included screws to attach two ceiling-mount T-bar clips to the back of the AP.
2. Push the AP onto the ceiling T-bar until it clicks securely in place.



Note: The ceiling mounting clips are for two different sizes of ceiling T-bars. The narrow clips are for 15 mm bars. The wider clips are for 24.5 mm bars.

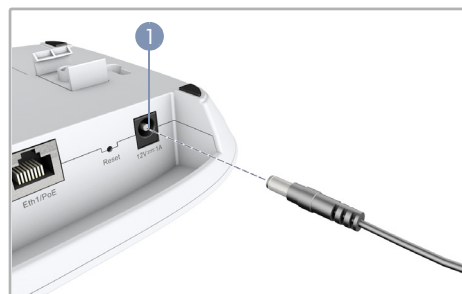
2 Connect Cables

a. Connect LAN Cables



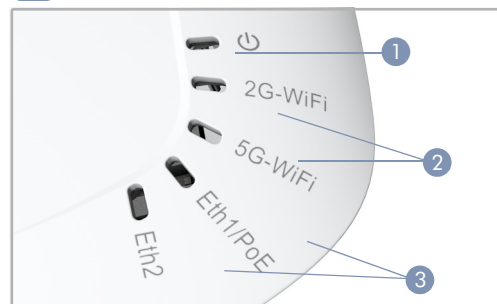
1. Connect Category 5e or better cable to the Eth1/PoE 1000BASE-T RJ-45 port. When connected to a PoE source, the Eth1/PoE port connection provides power to the unit.
2. (Optional) Connect a local LAN switch or computer to the Eth2 1000BASE-T RJ-45 port.

b. (Optional) Connect AC Power Adapter



1. Connect the AC power adapter to the DC power jack on the AP and then plug the adapter into a nearby AC power source.

3 Check AP LEDs



1. Power LED — on amber for normal operation.
2. 2G-WiFi and 5G-WiFi LEDs — on green for radio enabled.
3. Eth1/PoE and Eth 2 LEDs — on green for a valid LAN link.

4 Lock the AP in Place



1. The AP includes a Kensington security slot on the side panel. To prevent unauthorized removal of the AP, use a Kensington security cable (not included) to attach the AP to a fixed object. Insert the cable lock into the security slot, and then turn the key.

Hardware Specifications

AP Chassis

Size (WxDxH)	146.8 x 146.7 x 35.5 mm (5.77 x 5.77 x 1.39 in.)
Weight	0.36 kg (0.79 lb)
Temperature	Operating: 0° C to 50° C (32° F to 122° F) Storage: -40° C to 70° C (-40° F to 158° F)
Humidity	Operating: 10% to 90% (non-condensing)

Network Interfaces

Ports	Eth1/PoE RJ-45 Port: 1000BASE-T, PoE PD Eth2 RJ-45 Port: 1000BASE-T
2.4 GHz Radio	IEEE 802.11b/g/n
5 GHz Radio	IEEE 802.11a/ac/n
Bluetooth Radio	IEEE 802.15.1
Radio Frequencies	2.4 – 2.4835 GHz (US, Canada, ETSI) 5.15 – 5.25 GHz (lower band) US/Canada, Europe 5.725 – 5.825 GHz (upper band) US/Canada

Power Specifications

PoE Input Power	44-55 VDC, 0.63-0.3 A, 802.3af/at-compliant
DC Input Power	12 VDC, 1A
Power Consumption	PoE Input: PoE 44~55 VDC, 11 W max DC Input: 12 VDC, 10 W max.

Regulatory Compliances

Radio	EN300 328 V2.1.1(2016-11) EN301 893 V2.1.1(2017-03) 47 CFR FCC Part 15.247 47 CFR FCC Part 15.407 AS/NZS 4268: 2017
Emissions	EN 301 489-1 V2.1.1 (2017-02) EN 301 489-17 V3.1.1 (2017-02) EN 55032:2015 EN 55024:2010/A1:2015 AS/NZS CISPR 32:2015, Class B 47 CFR FCC Rules and Regulations Part 15 Subpart B, Class B Digital Device Canada Standard ICES-003, Issue 6, Class B CNS 13438 LP0002 (ECW5211-L only)
Safety	Low Voltage Directive (2014/35/EU, formerly 2006/95/EC, formerly 73/23/EEC) CNS 14336-1
Taiwan RoHS	CNS 15663